

**Awning Policy**  
**Brandywine, A Planned Community**

**Executive Board Approval Date** June 1, 2006

**Revision History** April 23, 2026

**Policy Statement**

The Awning Policy details the guidelines for addition of a patio awning at Brandywine, A Planned Community. An ARC submission is required for the installation of an awning that adheres to the Guidelines.

**Guidelines**

- Awnings are permitted to the rear or rear side of the home, depending on where the patio extends from the home.
- The color of the awning support frame must be Sand, to match siding.
- The color of the fabric must coordinate with the siding color and shutters – keeping with taupe or light brown tones. On Page 2 are representative samples of colors that are acceptable.
- An example of the fabric to be used and a drawing of the proposed installation area should accompany the ARC request.

*Bernadette Howard* 4-23-26

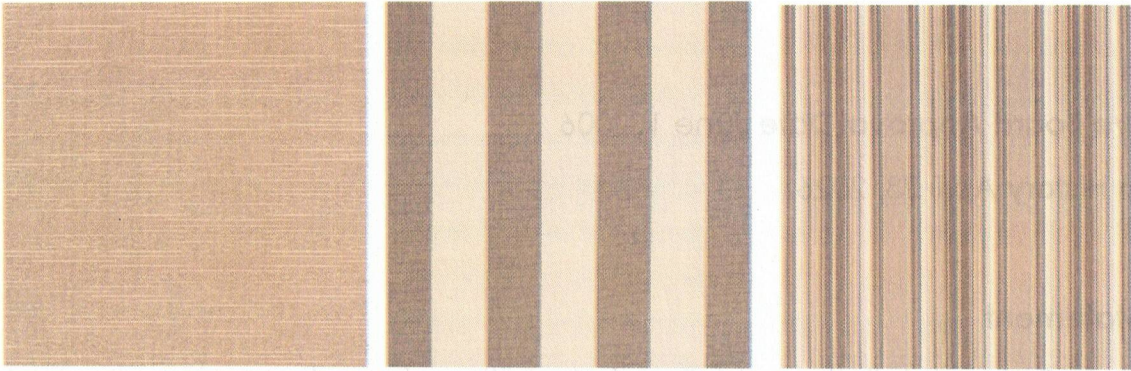
President

Date

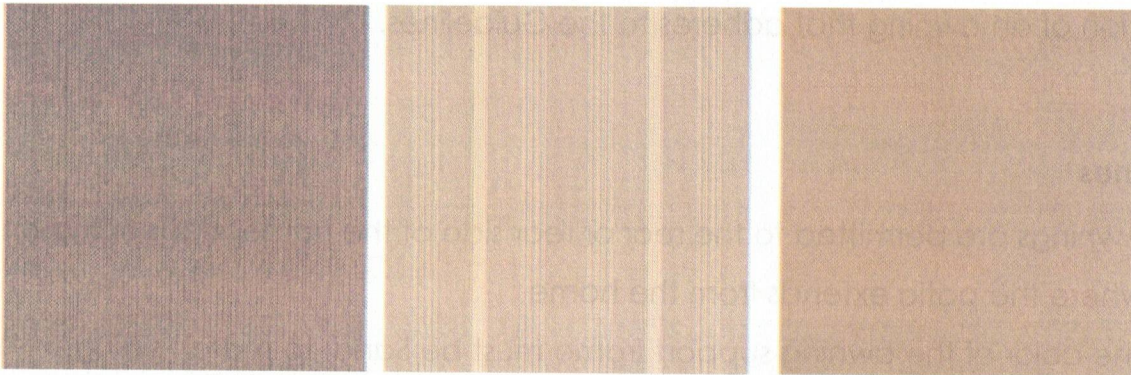
*Quia D. Frey* 4-23-26

Secretary

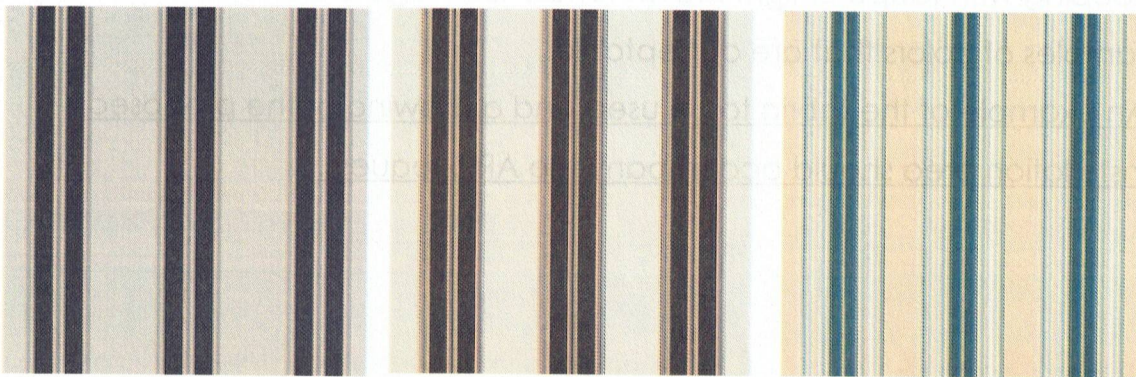
Date



Tans/Browns/Taupe



Tans/Browns/Taupe



Taupe/Navy

Taupe/Black

Taupe/Tan/Green